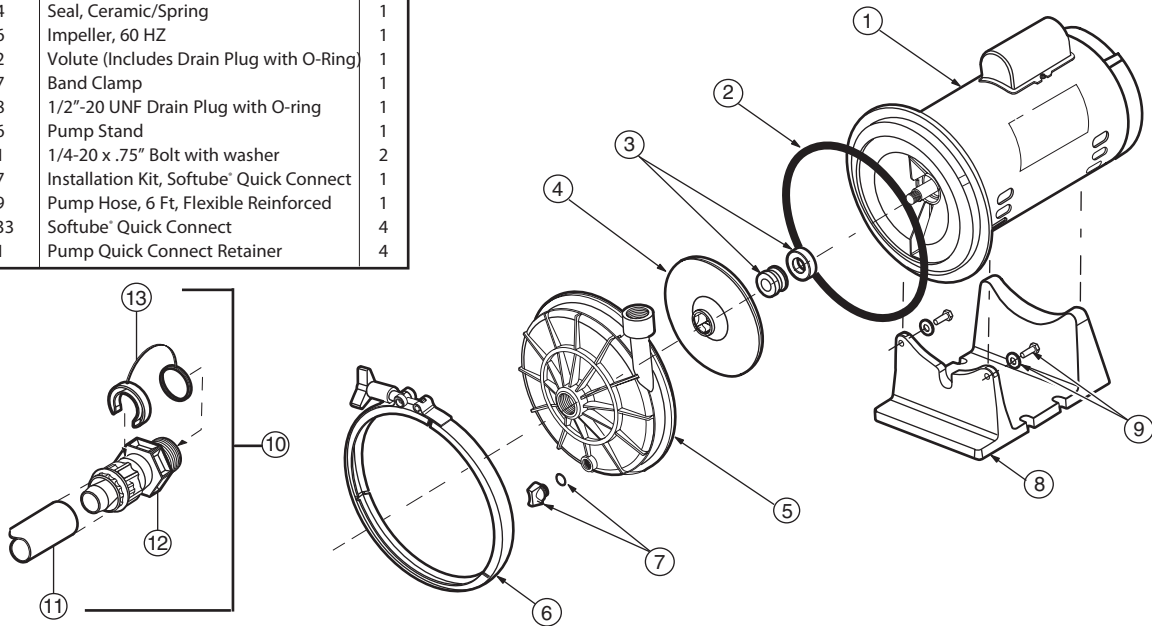


Exploded Parts Diagram

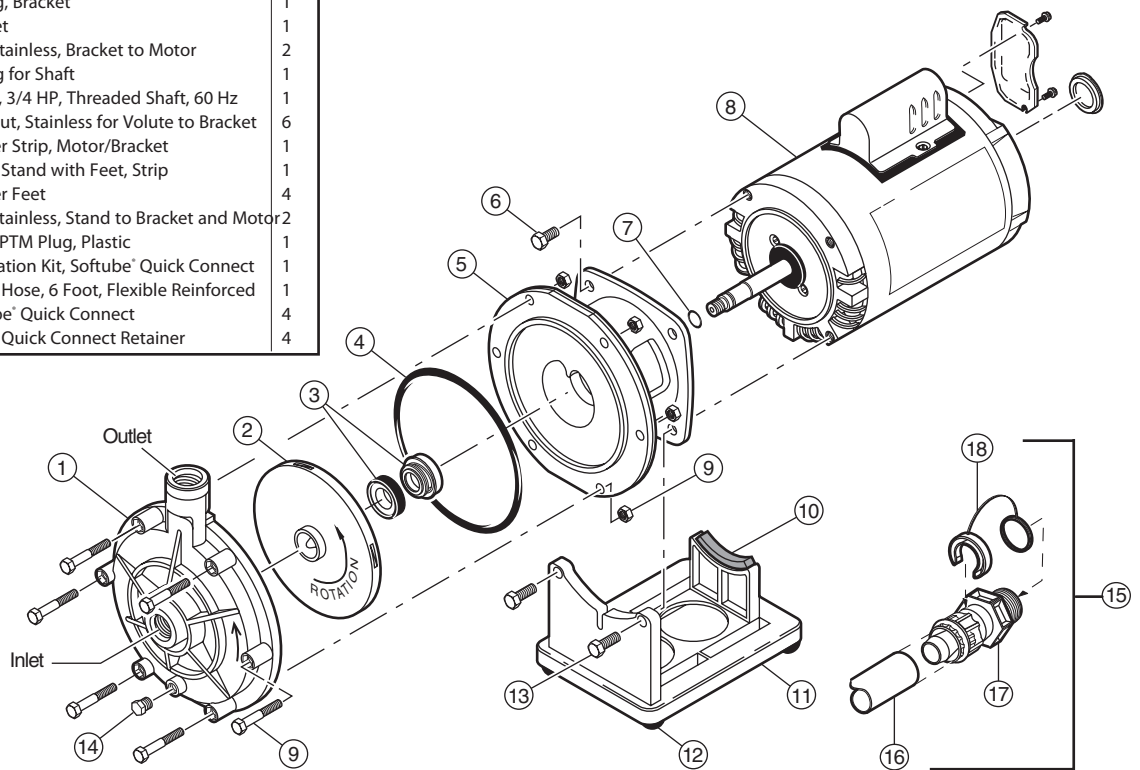
Polaris Halcyon Booster Pump Part #PB4-60Q

No.	Part #	Description	Qty
1	P64	3/4 HP Motor – Seal Plate Assembly	1
2	P85	O-Ring, Seal Plate	1
3	P84	Seal, Ceramic/Spring	1
4	P16	Impeller, 60 HZ	1
5	P82	Volute (Includes Drain Plug with O-Ring)	1
6	P87	Band Clamp	1
7	P88	1/2"-20 UNF Drain Plug with O-ring	1
8	P86	Pump Stand	1
9	P91	1/4-20 x .75" Bolt with washer	2
10	P17	Installation Kit, Softube® Quick Connect	1
11	P19	Pump Hose, 6 Ft, Flexible Reinforced	1
12	P133	Softube® Quick Connect	4
13	P21	Pump Quick Connect Retainer	4



Polaris Booster Pump Part #PB4-60

No.	Part #	Description	Qty
1	P5	Volute (Includes Drain Plug)	1
2	P15	Impeller	1
3	P55	Seal, Stainless Steel Cup/Spring	1
4	P95	O-Ring, Bracket	1
5	P10	Bracket	1
6	P35	Bolt, Stainless, Bracket to Motor	2
7	P40	O-Ring for Shaft	1
8	P61	Motor, 3/4 HP, Threaded Shaft, 60 Hz	1
9	P25	Bolt/Nut, Stainless for Volute to Bracket	6
10	P80	Rubber Strip, Motor/Bracket	1
11	P70	Pump Stand with Feet, Strip	1
12	P75	Rubber Feet	4
13	P65	Bolt, Stainless, Stand to Bracket and Motor	2
14	P20	1/8" NPTM Plug, Plastic	1
15	P17	Installation Kit, Softube® Quick Connect	1
16	P19	Pump Hose, 6 Foot, Flexible Reinforced	1
17	P133	Softube® Quick Connect	4
18	P21	Pump Quick Connect Retainer	4



2620 Commerce Way, Vista, CA 92081-8438 • 760-599-9600 • 1-800-822-7933 • www.polarispool.com